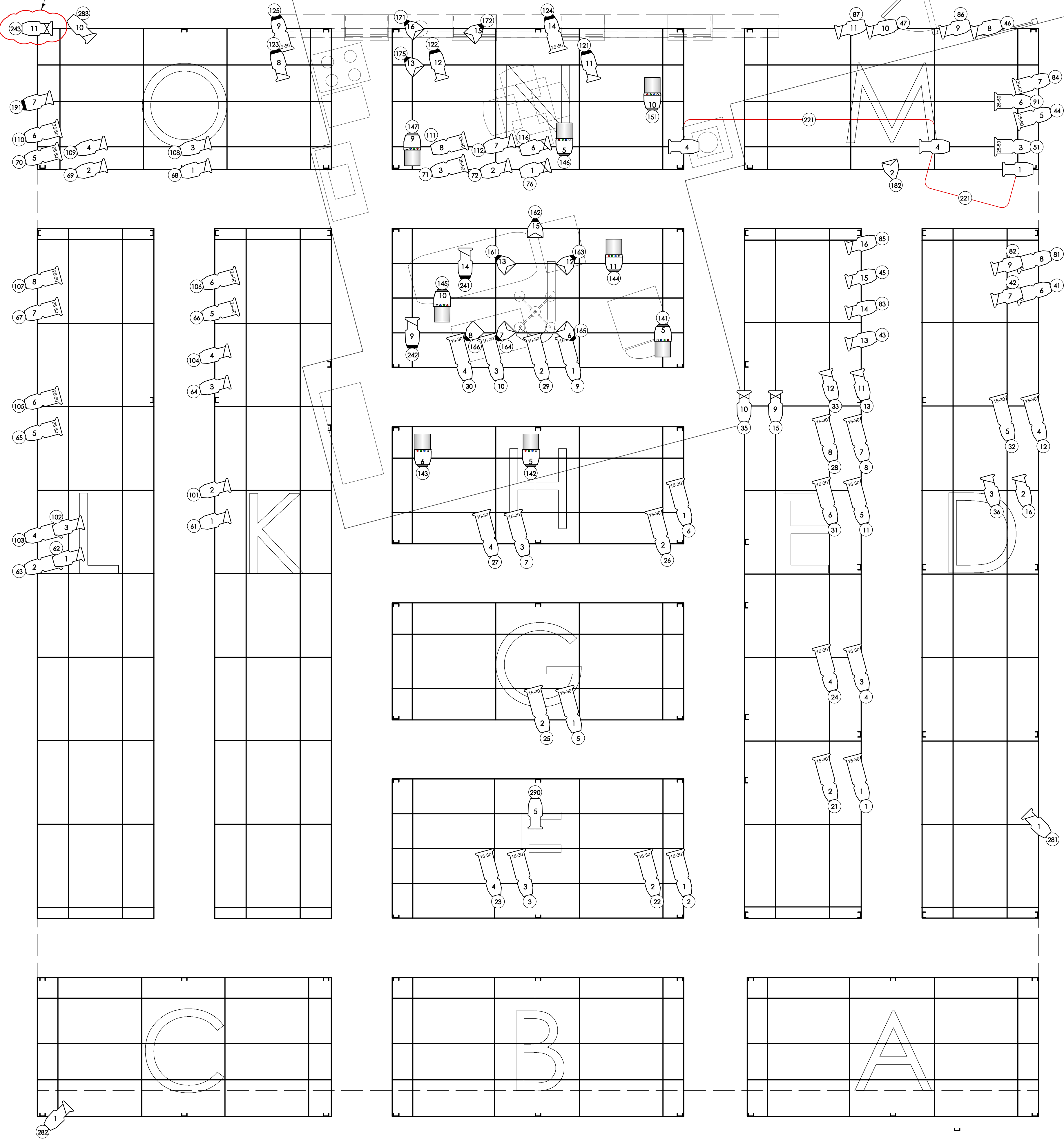


CL

Please Note:  
Fixture is falled down from Catwalks.  
Fixture height is 12" below Soffit.

Please Note:  
Ganging is shown as a guide for  
minimizing circuit usage. Actual  
ganging at the discretion of ME.



KEY

S4 70 deg, 575w.  
S4 50 deg, 575w.  
S4 36 deg, 575w.  
S4 26 deg, 575w.

S4 19 deg, 575w.  
S4 25-50 Zoom, 575w.  
S4 15-30 Zoom, 575w.  
Strand 6" Fres, 1Kw.

S4-par WFL, 1Kw.  
S4-par MFL, 1Kw.  
COLORado Zm 2, 214w.  
Strand PL Cyc Mk2, 140w.

PAR 16 Birdie, 75w.  
GAM TwinSpin Rotator  
Practical  
Hot Power

Barn Door  
Top Hat  
Half Hat  
12" Side Arm  
36" Side Arm

LEGEND

Unit  
Channel  
750w. Lamp

Andrew Johnson Theatre, Tennessee Performing Arts Center, Nashville, TN

Director: Rene Copeland Set Designer: Gary Hoff Lighting Designer: Phillip Franck

Scale: 3/8" = 1'-0" Opening Date: March 25, 2017 Drawing Date: March 7, 2017

GRID LIGHT PLOT

PAGE 1 OF 3

-This document details playing positions, shapes, and color related to the visual aspects of the production only.  
-It is understood that all specifications relate solely to the appearance of the design, and in no way does the designer assume responsibility for the safety, structural integrity, building, rigging, construction, fabrication, materials, or equipment used in the execution of the design.  
-It is the designer's expectation that all relevant safety rules will be adhered to during the execution of the design.



NASHVILLE  
REP

NASHVILLE  
REPERTORY  
THEATRE

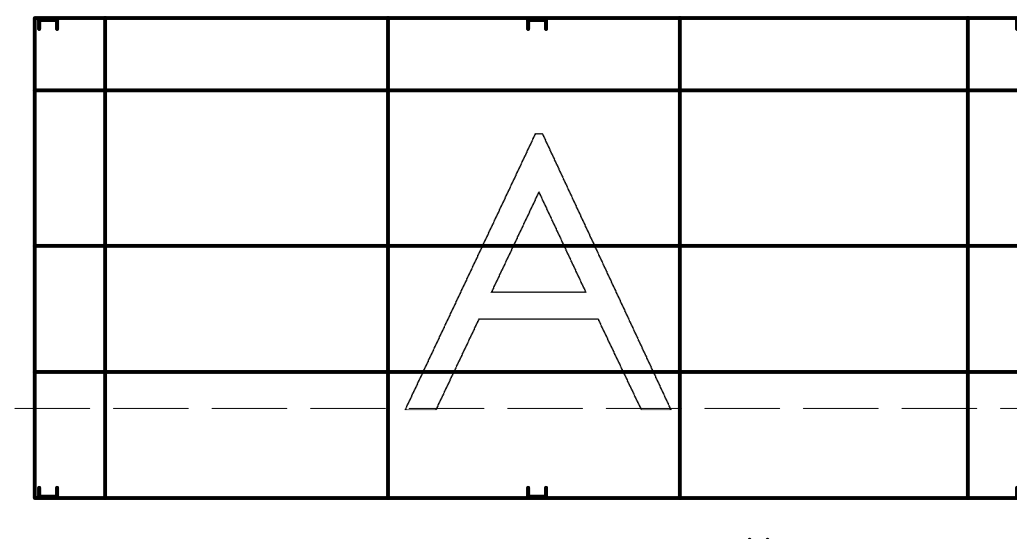
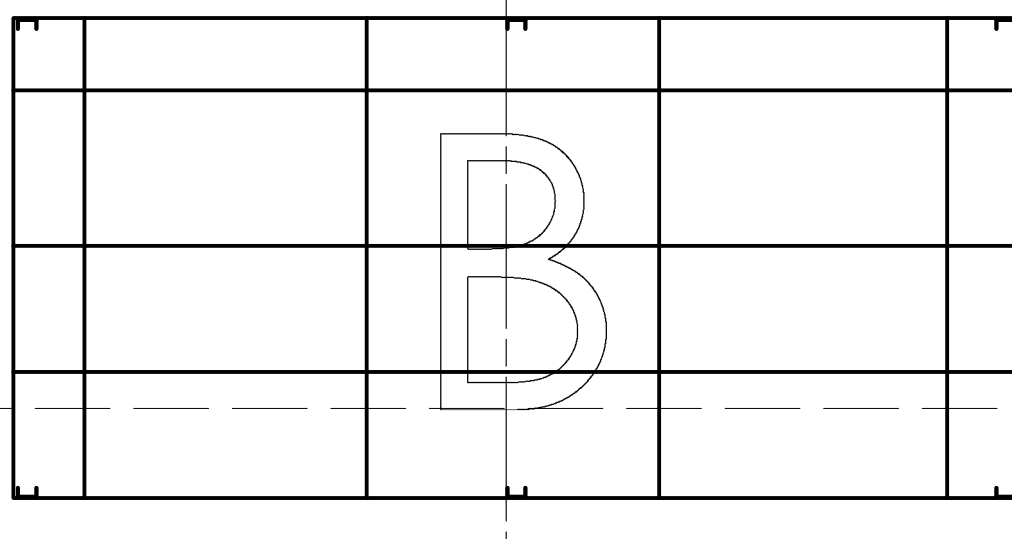
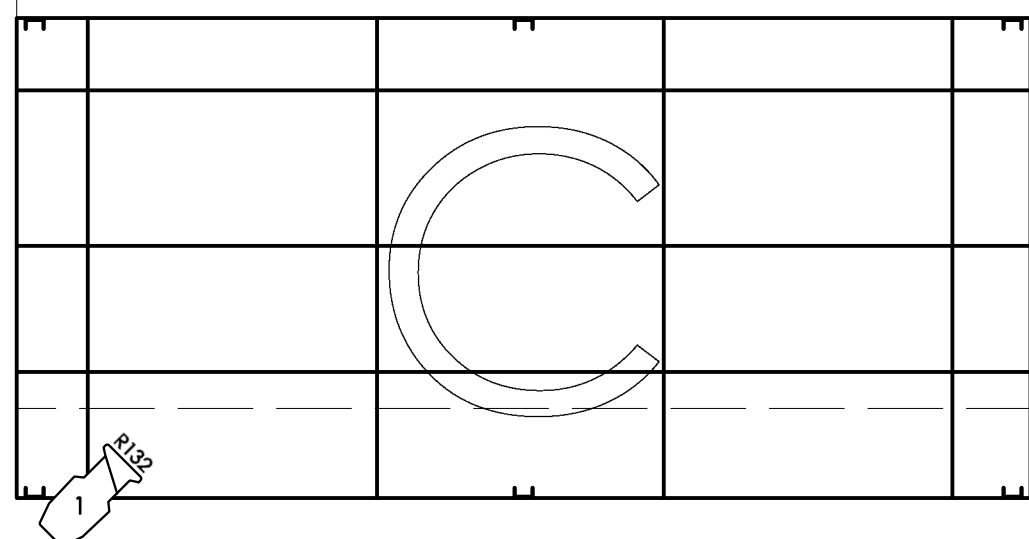
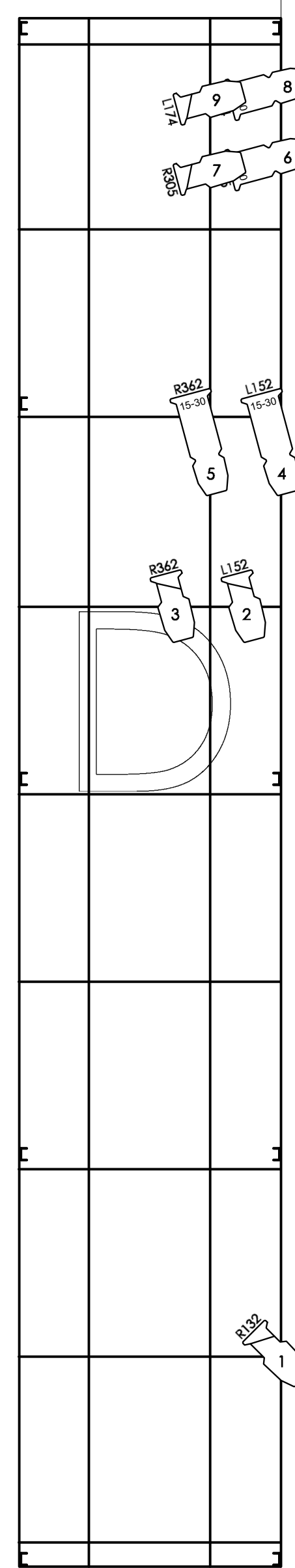
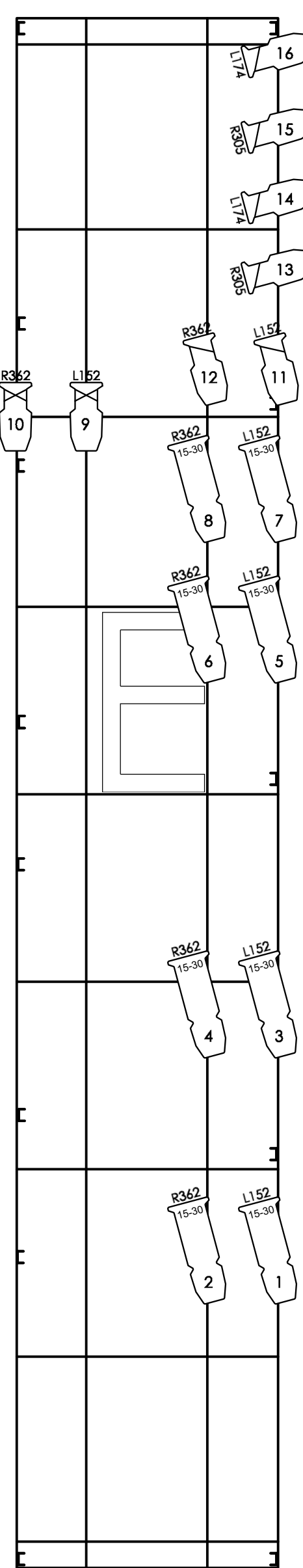
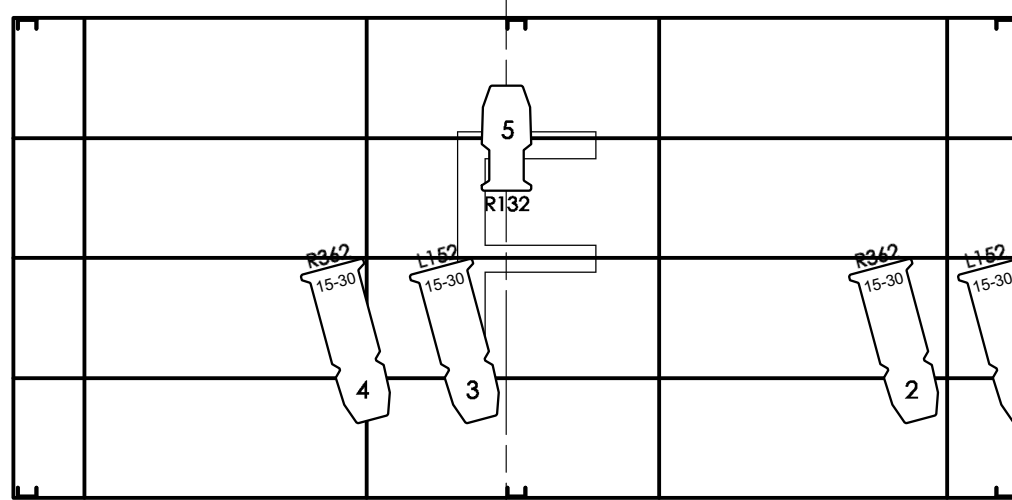
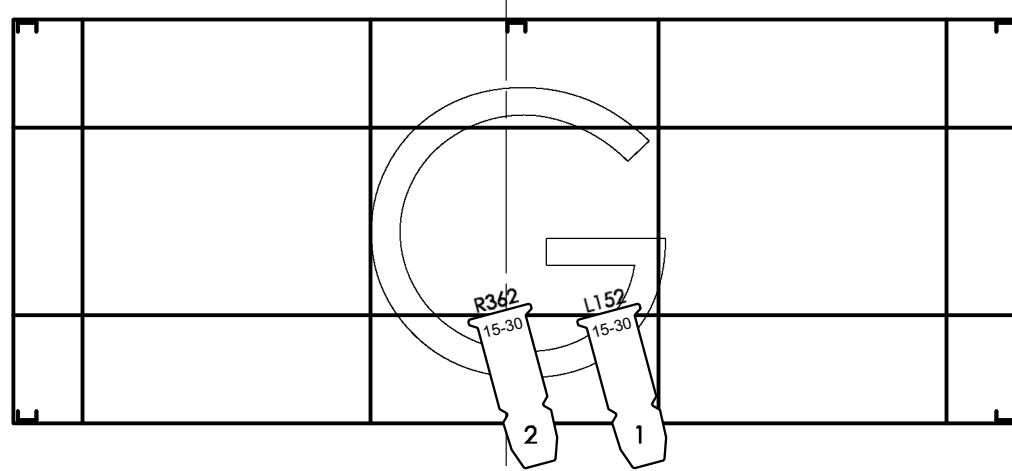
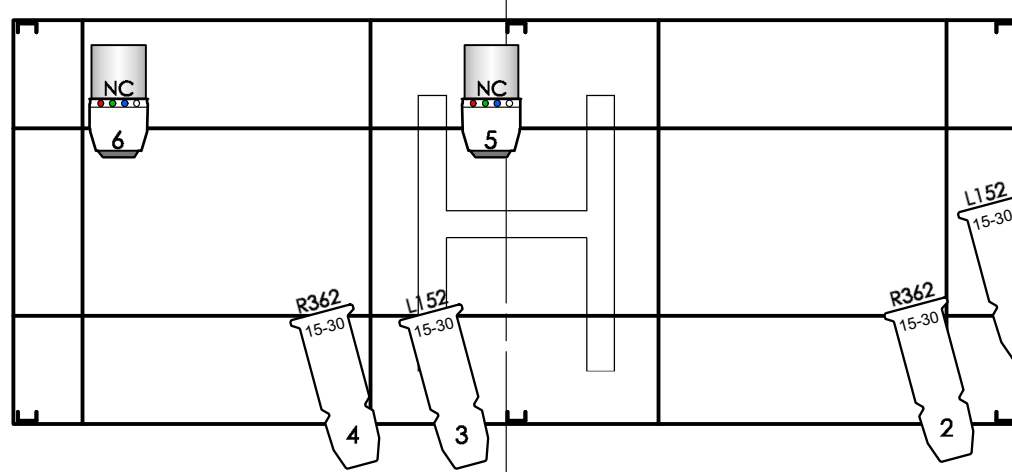
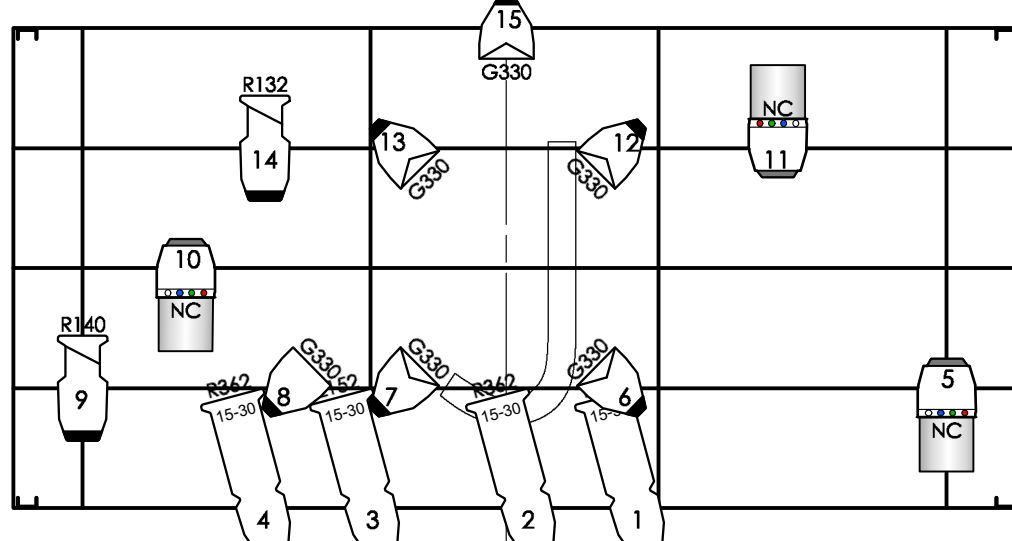
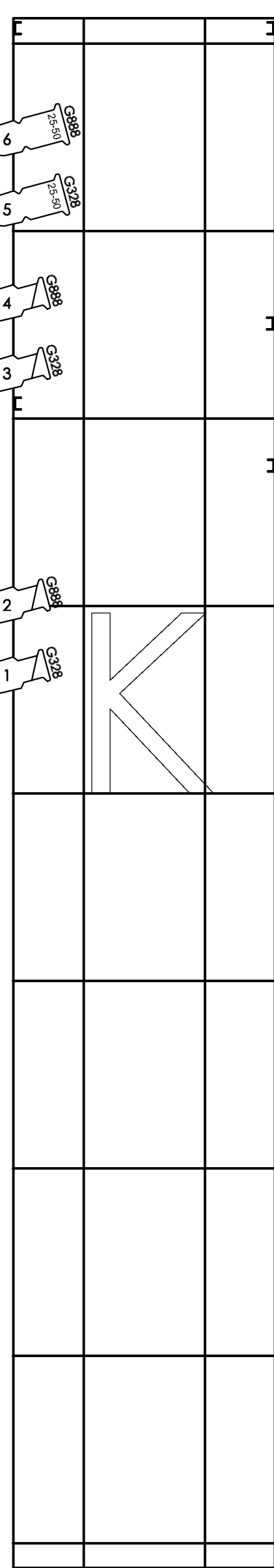
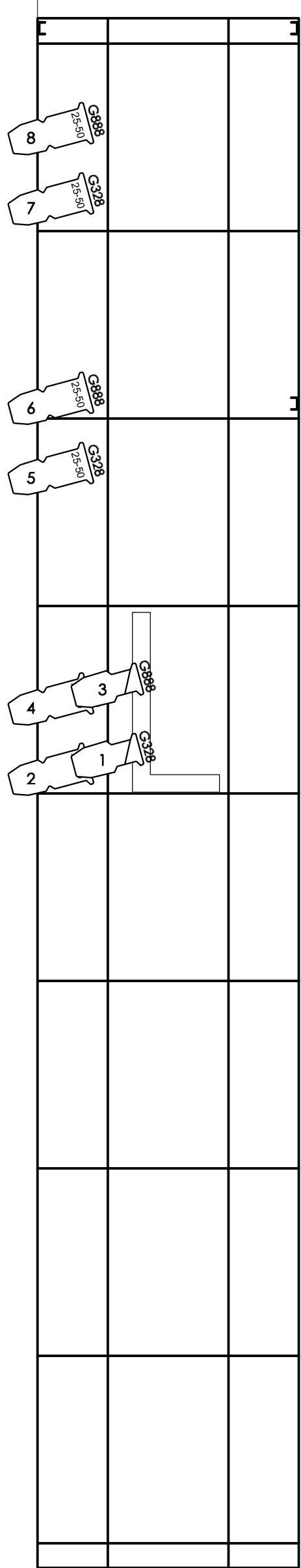
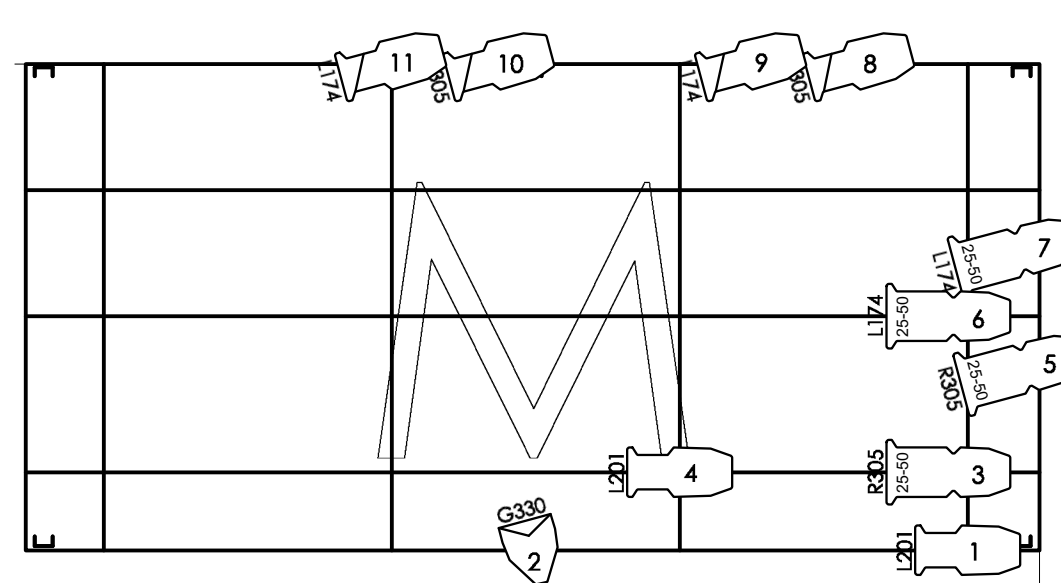
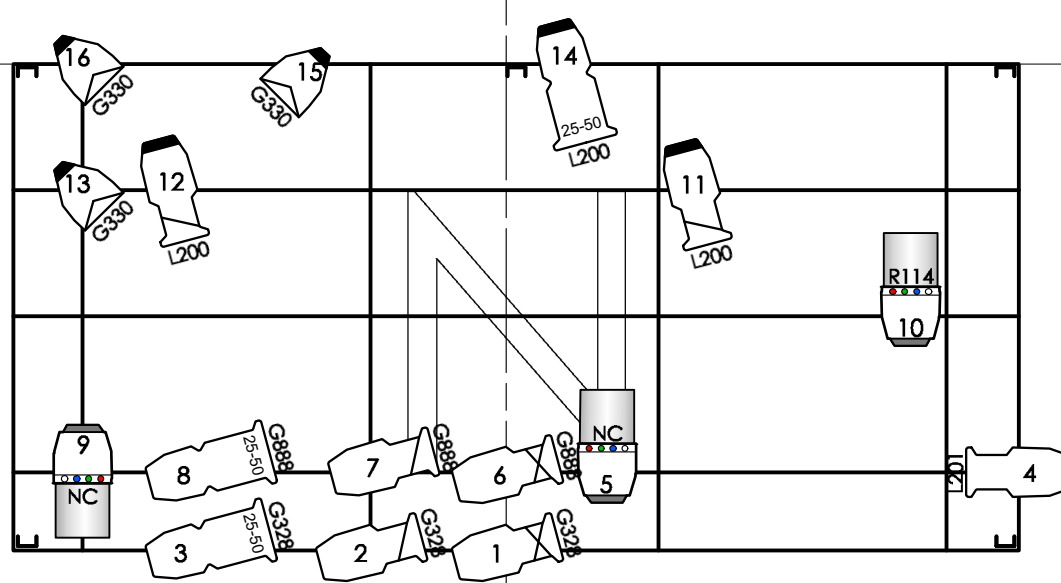
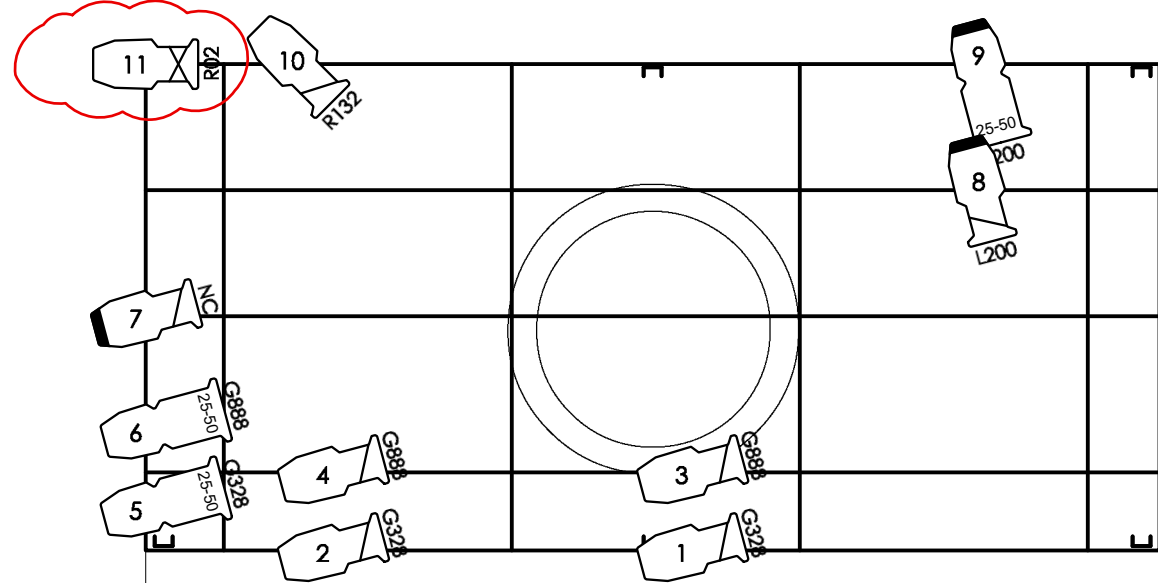


A RAISIN IN THE SUN  
BY LORRAINE HANSBERRY



CL

Please Note:  
Fixture is falled down from Catwalks.  
Fixture height is 12" below Soffit.



# KEY

- S4 70 deg, 575w.
- S4 50 deg, 575w.
- S4 36 deg, 575w.
- S4 26 deg, 575w.

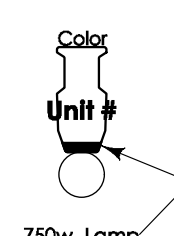
- S4 19 deg, 575w.
- S4 25-50 Zoom, 575w.
- S4 15-30 Zoom, 575w.
- Strand 6" Fres, 1Kw.

- S4-par WFL, 1Kw.
- S4-par MFL, 1Kw.
- COLORado Zm 2, 214w.
- Strand PL Cyc Mk2, 140w.

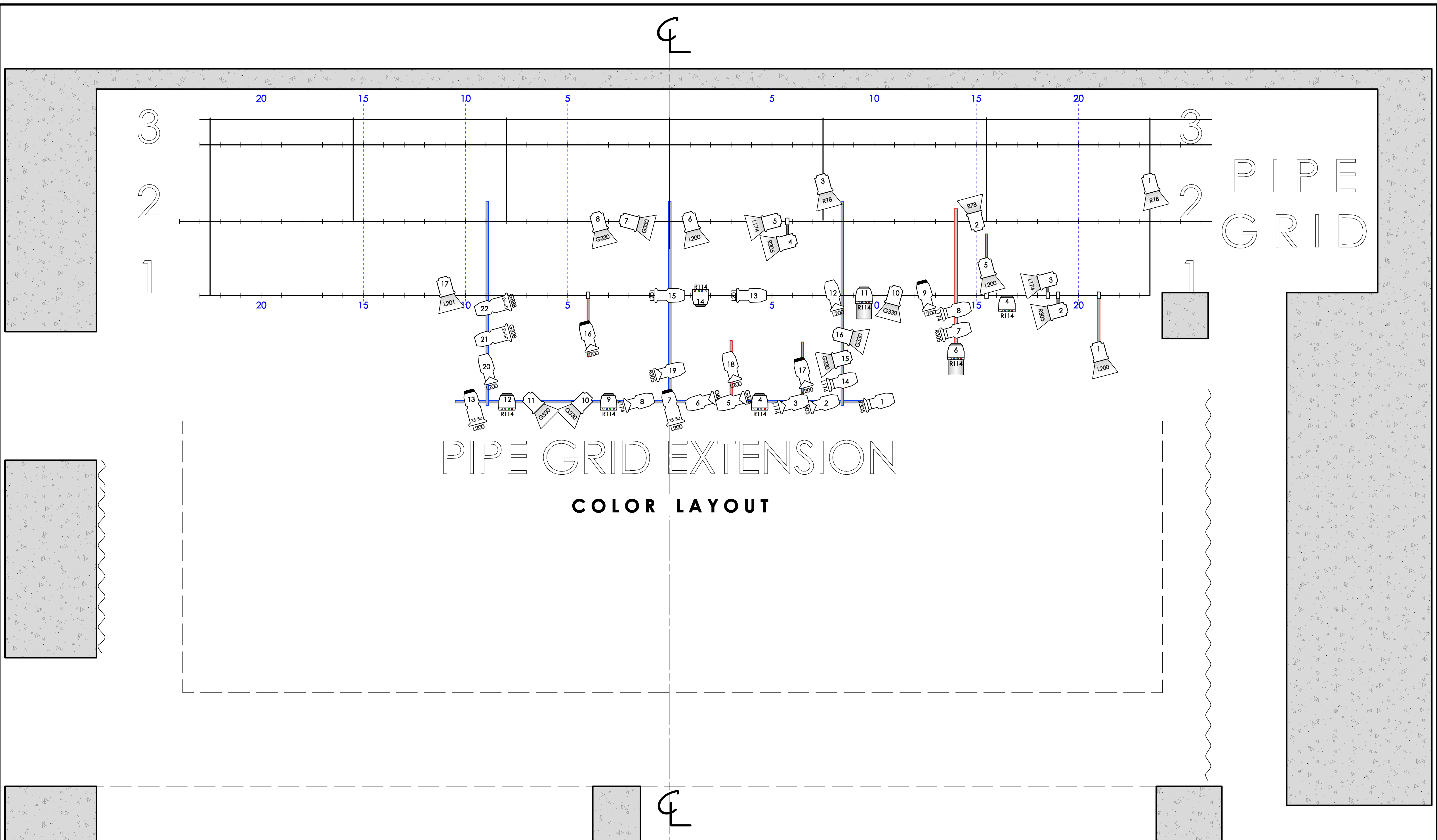
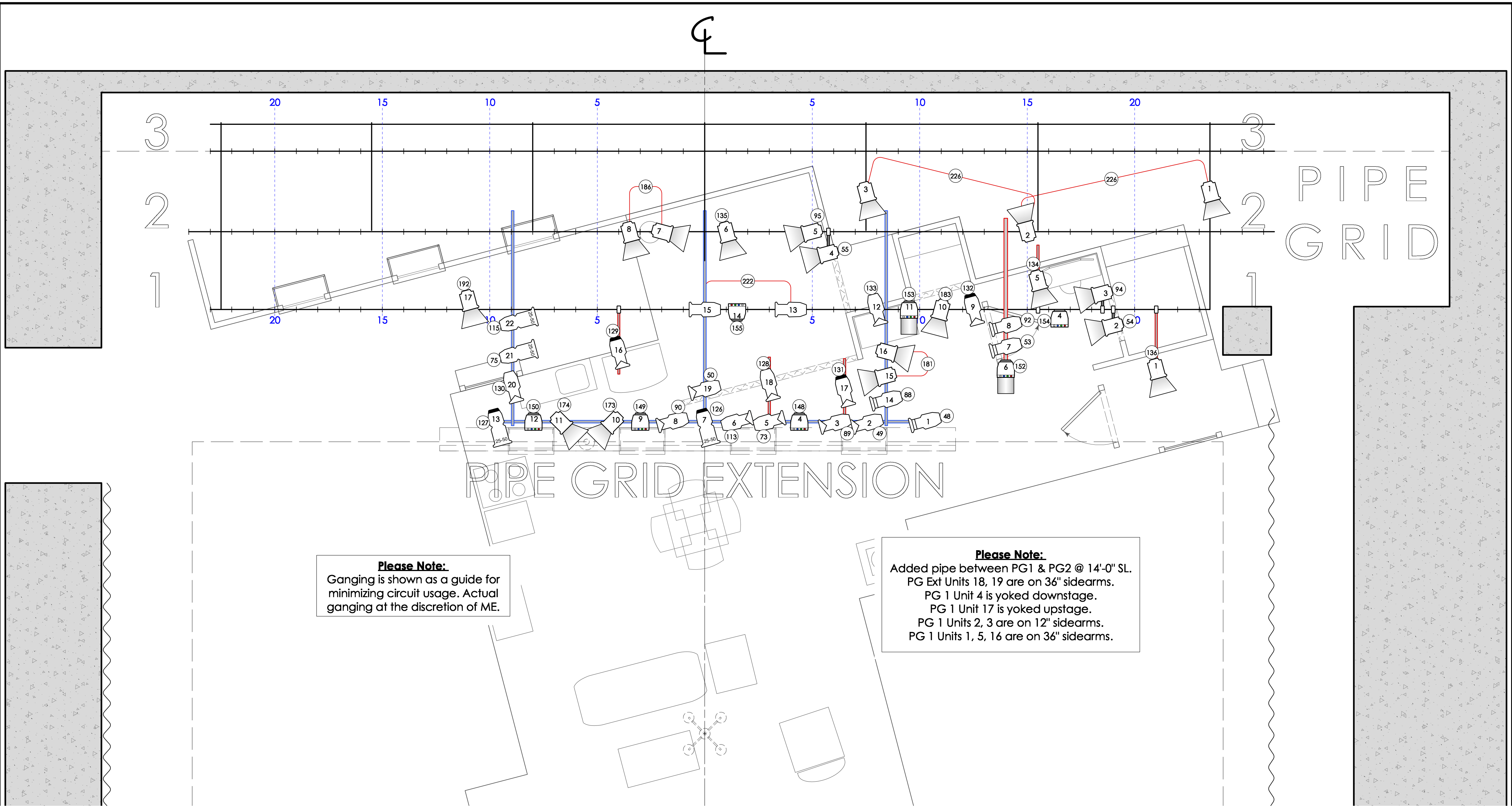
- PAR 16 Birdie, 75w.
- GAM TwinSpin Rotator
- Practical
- Hot Power

- Barn Door
- Top Hat
- Half Hat
- 12" Side Arm
- 36" Side Arm

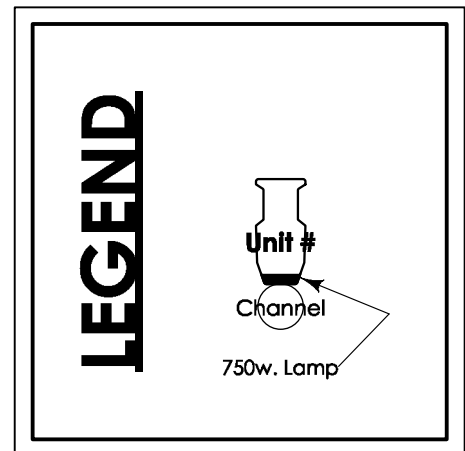
# LEGEND



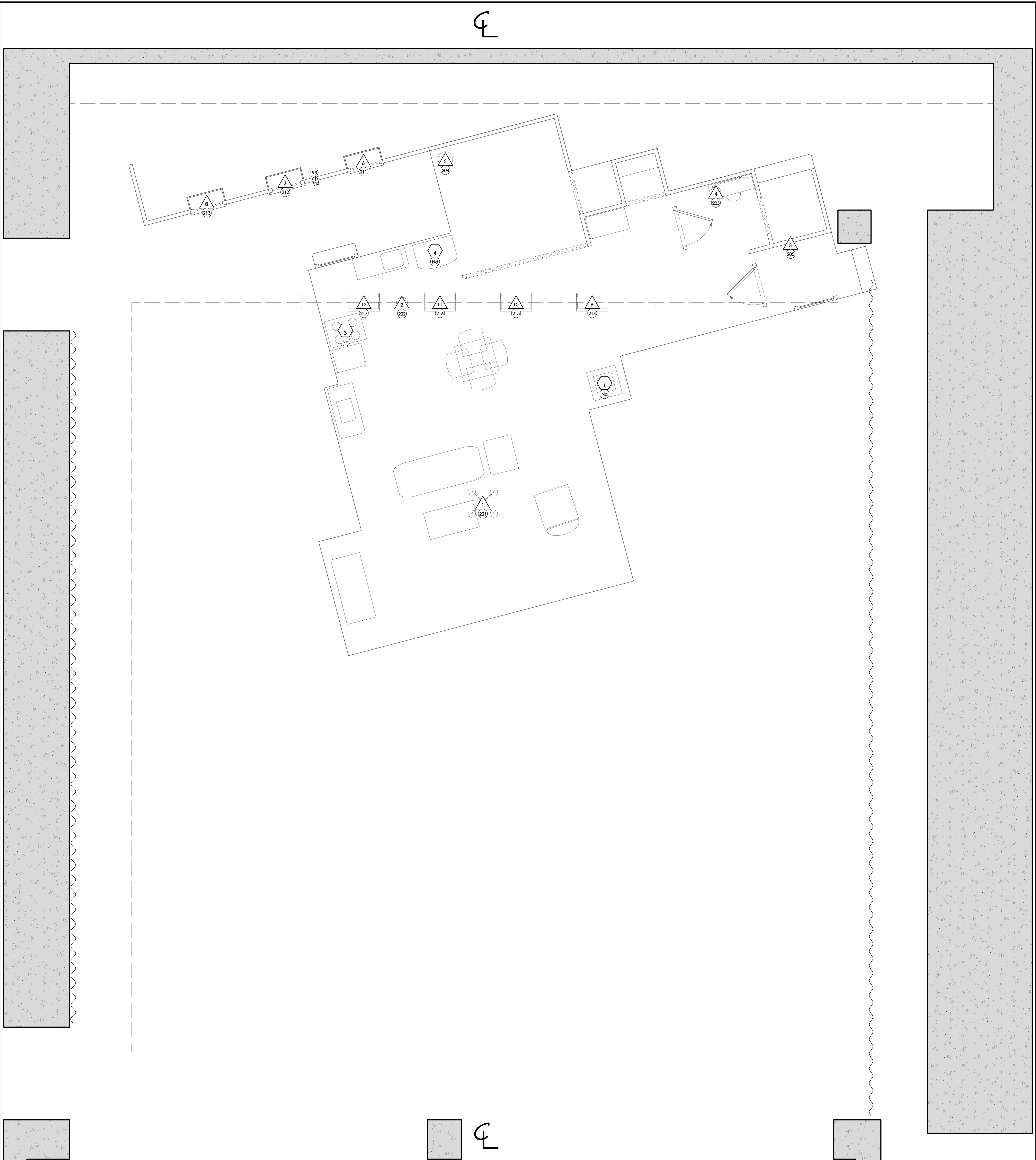




<b>KEY</b>	S4 70 deg, 575w.	S4 19 deg, 575w.	S4-par WFL, 1Kw.	PAR 16 Birdie, 75w.	Barn Door
	S4 50 deg, 575w.	S4 25-50 Zoom, 575w.	S4-par MFL, 1Kw.	GAM TwinSpin Rotator	Top Hat
	S4 36 deg, 575w.	S4 15-30 Zoom, 575w.	COLORado Zm 2, 214w.	Practical	Half Hat
	S4 26 deg, 575w.	Strand 6" Fres, 1Kw.	Strand PL Cyc Mk2, 140w.	Hot Power	12" Side Arm
					36" Side Arm







<b>KEY</b>		S4 70 deg, 575w.		S4 19 deg, 575w.		S4-par WFL, 1Kw.		PAR 16 Birdie, 75w.		Barn Door
		S4 50 deg, 575w.		S4 25-50 Zoom, 575w.		S4-par MFL, 1Kw.		GAM TwinSpin Rotator		Top Hat
		S4 36 deg, 575w.		S4 15-30 Zoom, 575w.		COLORado Zm 2, 214w.		Practical		Half Hat
		S4 26 deg, 575w.		Strand 6" Fres, 1Kw.		Strand PL Cyc Mk2, 140w.		Hot Power		12" Side Arm
										36" Side Arm

**LEGEND**

Unit #  
 Channel  
750w. Lamp